

# **W BEAVERFIT**

**SPECIAL OPERATIONS EQUIPMENT**



+44 (0) 1694 751265



info@beaverfit.com



www.beaverfit.com

# WHO WE ARE

Creator of the world's first fully functional containerised gym, BeaverFit is the leading global manufacturer of outdoor fitness equipment and training solutions. With a commitment to product excellence through cutting edge design and manufacturing processes, BeaverFit create innovative fitness equipment that provides a wide range of human performance training functionalities with industry leading durability for use in any outdoor environment.

Since 2010, BeaverFit has been the leading supplier of container gyms and outdoor fitness solutions to the U.S. and UK militaries, and continues to innovate and enhance both indoor and outdoor facilities for corporations, commercial gyms, universities, sports clubs and individual users.

In 2015, the industry saw the introduction of BeaverFit Special Operations Equipment (SOE), a sister company to BeaverFit Ltd, supplying sought after and unique Special Operations Equipment, from Training Towers through to Live Fire Shoot Houses. The BeaverFit SOE client base includes the UK MOD, Foreign Commonwealth Office, NATO, European Armed Forces, Royal Marines, Special Forces, US Armed Forces and more.

Our solutions are manufactured to the highest of standards, exceeding all expectations. This methodology is at the heart of what we do, and represents the very foundation of which the company has been built.

*"We create what does not yet exist"*

Tom Beaver  
Managing Director  
BeaverFit Ltd



**SPECIAL OPERATIONS EQUIPMENT**

**BEAVERFIT ARMOURIES** are manufactured using ISO Containers and Modular Solutions. BeaverFit offer both low-security storage options through to Government MFES approved, ballistic, and blast resistant facilities. We can offer the highest level of protection in a portable configuration. The unit externally represents a Standard ISO Container, ensuring it draws minimal attention.

**SECURITY THROUGH OBSCURITY.**

SELF CONTAINED, SUSTAINABLE WITH OPTIONAL CLIMATE CONTROL, + SOLAR PANELS.



**KEY BENEFITS**

- Secure + Discreet Design
- Integrated + Flexible Weapon Storage
- Scalable Over Budgetary Cycles
- High-Level Security
- Semi-Permanent Solution, Can Be Relocated
- Insulation + Electrical Infrastructure
- Government Approved Facility

**DETAILS**

- Bespoke To Customer Requirements
- 10ft, 20ft + 40ft ISO Containers
- No Requirement For Anchors Or Groundworks
- Quick-Commissioning
- Optional Secure Doors, Weapons Racking, Climate Control, Alarm, CCTV + De-Humidification
- Fire Rated Materials
- Reduced Construction Costs Compared To Traditionally Built Infrastructure

**BEAVERFIT AMMUNITION STORAGE UNITS** are manufactured using ISO and Modular container solutions. This container can store a wide variety of ammunition and weaponry. The unit externally represents a standard ISO container, ensuring it draws minimal attention.

Blast and Ballistic options available.

**FOR MORE INFORMATION, CONTACT US AT [INFO@BEAVERFIT.COM](mailto:INFO@BEAVERFIT.COM)**

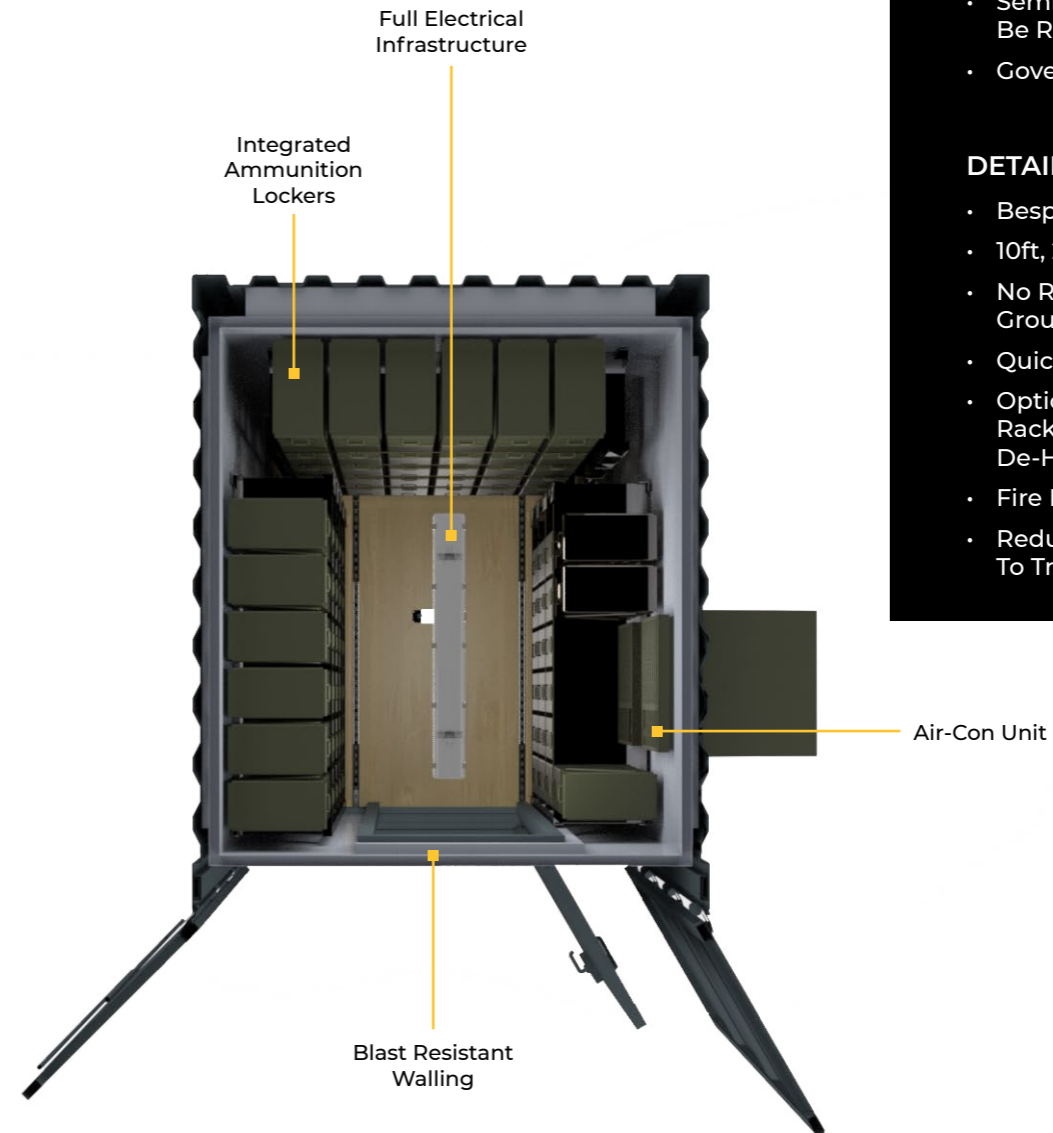
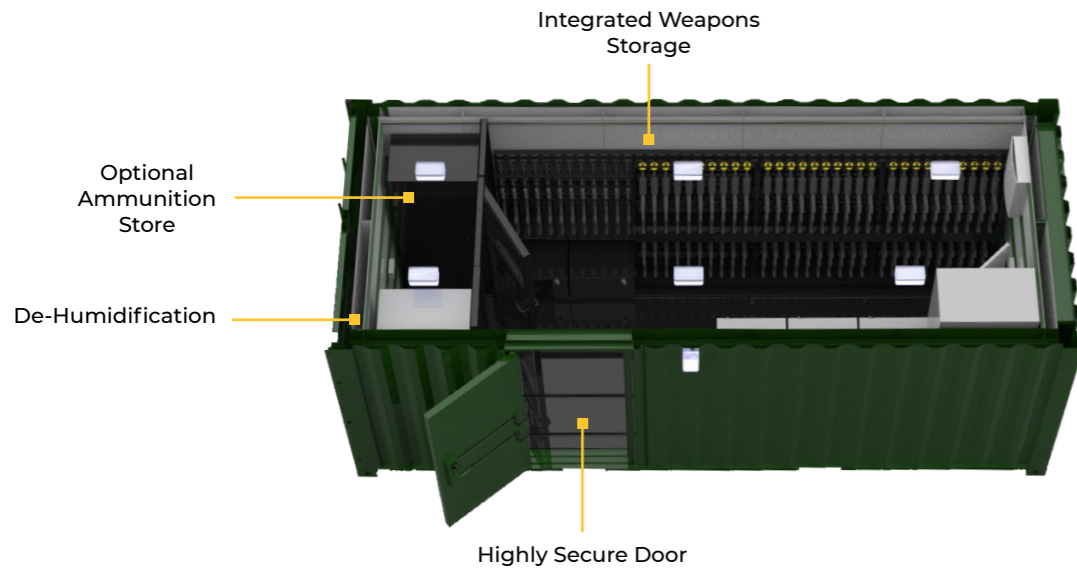


**KEY BENEFITS**

- Secure + Discreet Design
- Integrated + Flexible Ammunition Storage
- High-Level Security
- Scalable Over Budgetary Cycles
- Insulation + Electrical Adaptations
- Semi-Permanent Solution That Can Be Relocated
- Government Approved Facility

**DETAILS**

- Bespoke To Customer Requirements
- 10ft, 20ft + 40ft ISO Containers
- No Requirement Of Anchors Or Groundworks
- Quick-Commissioning
- Optional Secure Doors, Internal Racking, Climate Control, Alarm, CCTV + De-Humidification
- Fire Rated Materials
- Reduced Construction Costs, Compared To Traditionally Built Infrastructure



## SPECIAL OPERATIONS EQUIPMENT

BEAVERFIT SENSITIVE COMPARTMENTED INFORMATION FACILITIES (SCIF) can be designed to suit a variety of uses, where security and protection is paramount. With the highest forced entry rating of any fully portable secure room, this solution has the ability to adhere to a wide array of operational needs and requirements.

INCONSPICUOUS, HIGHLY PORTABLE, SECURE SOLUTIONS.

# SECURITY THROUGH OBSCURITY.

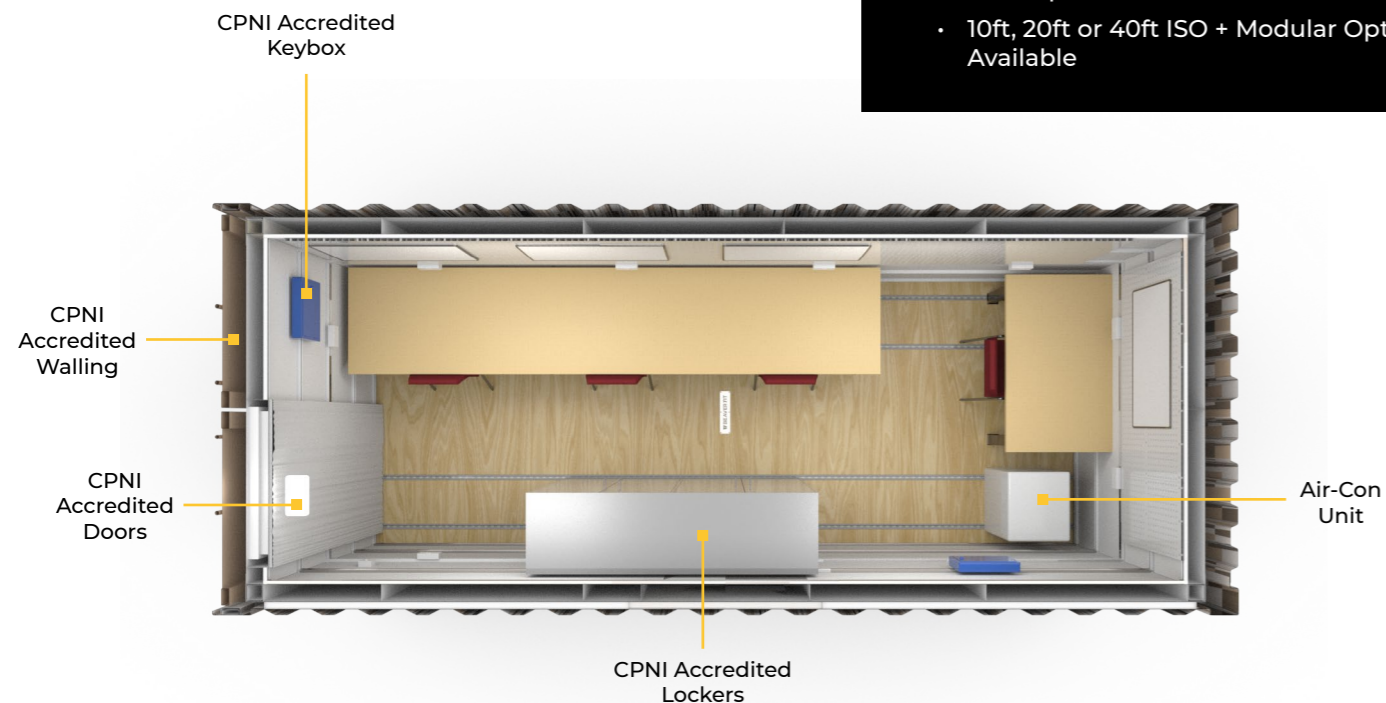


### KEY BENEFITS

- This Facility Allows Communication + Data Transfer Cables To Be Fully, Discreetly + Securely Integrated
- Easily Relocatable
- Optional Communication Protection
- High-Level Security
- Meets Desired Acoustic Ratings

### DETAILS

- Secure + Discreet Design
- Government MFES Approved Security Protection
- Government Tested As A Stand-Alone Secure Unit
- CPNI® Approved Floors, Walls + Alarms
- Thermally Insulated + Fire Retardant
- Air-Conditioned
- Inconspicuous
- 10ft, 20ft or 40ft ISO + Modular Options Available





BeaverFit originated from a family of Steel Fabricators, specialising in the industry since 1947.



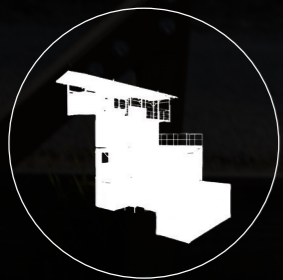
In 2006, Tom Beaver built a robust and innovative rig to train for the Arch challenge, made entirely from materials used by the family business.



Tom Beaver successfully introduced his product of excellence to the military. Thus, the birth of BeaverFit and further development of innovative products and fitness solutions - dominating the industry since 2010.



Co-founders, Tom and Jim Beaver further developed the product line to introduce the worlds first ever container gym solution - the FOB Locker. Since 2012, over 500 of these solutions have been deployed around the UK and Europe.



In 2015, the industry saw the introduction of BeaverFit Special Operations Equipment (SOE), a sister company to BeaverFit Ltd, supplying sought after and unique Special Operations Equipment, from Training Towers through to Live Fire Shoot Houses.



BeaverFit UK joined forces with two veterans from the USA, forming our sister company BeaverFit North America LLC and imminently winning their first contract with the U.S Marine Corps to supply 300 FOB Lockers.



**7+ YEARS  
IN BUSINESS**

BeaverFit's Special Operations Equipment (SOE) is an innovative evolution of our Human Performance solutions.



**MADE IN  
THE UK**

Our world-class equipment is custom designed for every location, enabling focused preparation for modern-day tactical operations and exercises.



**30+  
INNOVATIVE  
SOLUTIONS**

Consisting of Lockers, Rigs, Towers and Villages, our SOE line creates modular and portable training centres for the mission essential tasks of forced entry/breaching, tactical fitness, urban warfare and more.



**GOVERNMENT  
APPROVED  
FACILITIES**

This allows us to create the highest rated security level facilities, no matter what the requirements.

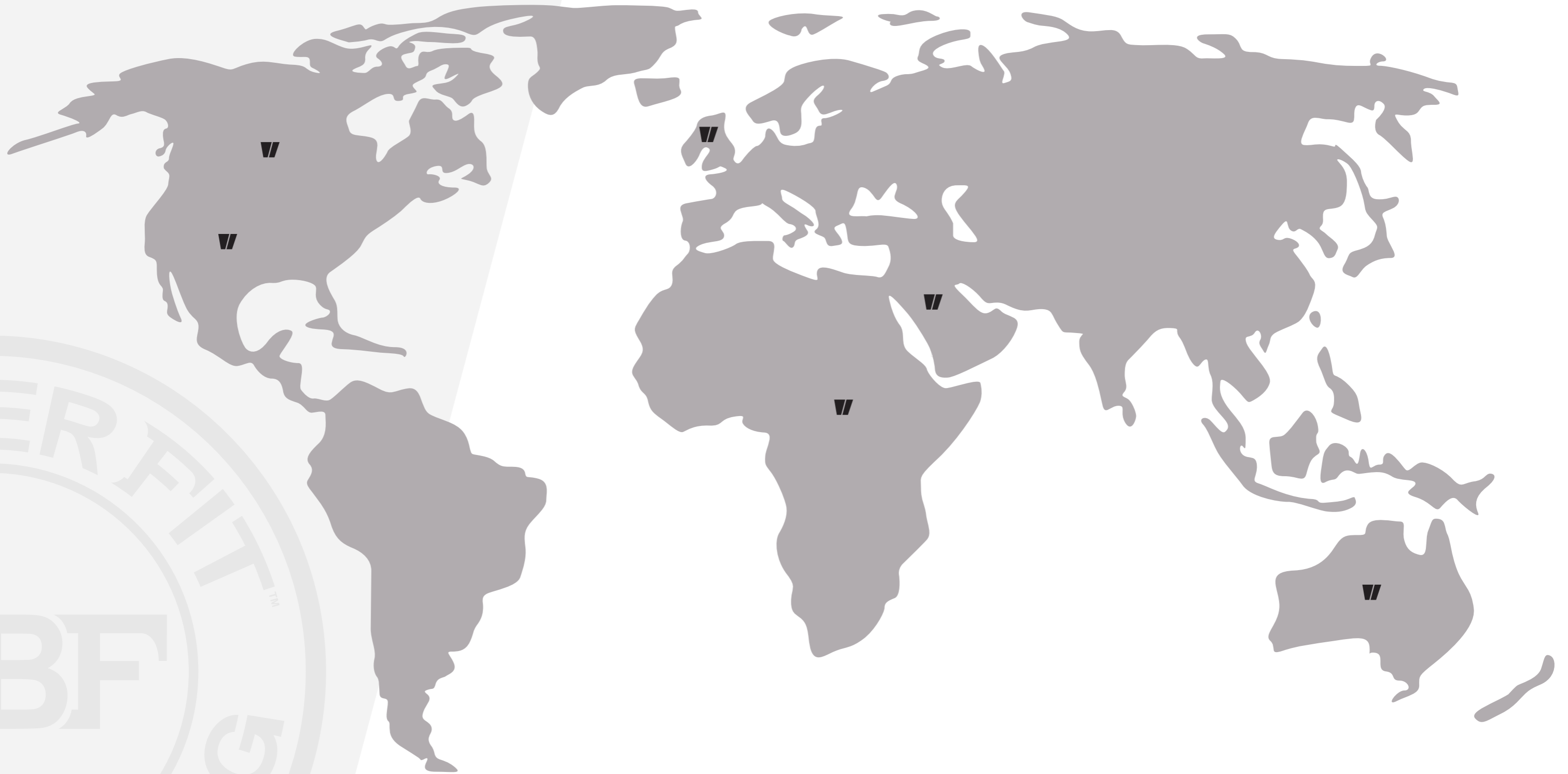


**300+ SOE  
SOLUTIONS  
DELIVERED**

With over 300 solutions delivered globally, we have a proven track record of expertly delivered projects, that have exceeded expectations from start to finish.

# OUR GLOBAL OPERATION

▮ PROJECT LOCATIONS



**CHRIS MCGRATH - USA**

E: [chris.mcgrath@beaverfitusa.com](mailto:chris.mcgrath@beaverfitusa.com)

T: (850) 816 - 9335

**NICK DAIL - USA**

E: [nick@beaverfitusa.com](mailto:nick@beaverfitusa.com)

T: (757) 284 - 9029

**GLENN OSINSKI - UK**

E: [glenn@beaverfit.com](mailto:glenn@beaverfit.com)

T: +44 (0) 1694 751 265

**FRED WALTERS - UK**

E: [fred@beaverfit.com](mailto:fred@beaverfit.com)

T: +44 (0) 1694 751 265

**CHRIS GOLDING - UK**

E: [chris.golding@beaverfit.com](mailto:chris.golding@beaverfit.com)

T: +44 (0) 1694 751 265

**SCOTT FLINT - AUS**

E: [scott@beaverfit.com](mailto:scott@beaverfit.com)

T: +61 (0) 408 687 816



**BEAVERFIT**  
SPECIAL OPERATIONS EQUIPMENT



+44 (0) 1694 751265



info@beaverfit.com



www.beaverfit.com