



# BEAVERFIT™

---

## DAM STRONG



+61 (0) 408 687 816



scott@beaverfit.com



www.beaverfit.com



# WHO WE ARE

Creator of the world's first fully functional containerised gym, BeaverFit is the leading global manufacturer of outdoor fitness equipment and training solutions. With a commitment to product excellence through cutting edge design and manufacturing processes, BeaverFit create innovative fitness equipment that provides a wide range of human performance training functionalities with industry leading durability for use in any outdoor environment.

Since 2010, BeaverFit has been the leading supplier of container gyms and outdoor fitness solutions to the U.S. and UK militaries, and continues to innovate and enhance both indoor and outdoor facilities for corporations, commercial gyms, universities, sports clubs and individual users.

In 2015, the industry saw the introduction of BeaverFit Special Operations Equipment (SOE), a sister company to BeaverFit Ltd, supplying sought after and unique Special Operations Equipment, from Training Towers through to Live Fire Shoot Houses. The BeaverFit SOE client base includes the UK MOD, Foreign Commonwealth Office, NATO, European Armed Forces, Royal Marines, Special Forces, US Armed Forces and more.

Our solutions are manufactured to the highest of standards, exceeding all expectations. This methodology is at the heart of what we do, and represents the very foundation of which the company has been built.

*"We create what does not yet exist"*

Tom Beaver  
Managing Director  
BeaverFit Ltd





# TRAINING COMPLEXES

SPECIAL OPERATIONS EQUIPMENT





## SPECIAL OPERATIONS EQUIPMENT

**BEAVERFIT TRAINING COMPLEXES** are fully-customisable in size, layout and functionality. Our shipping container based solutions can incorporate any BeaverFit SOE Training Obstacle, demonstrating all the components necessary to create a realistic scenario-based training facility.

**BEAVERFIT FACILITIES ARE SCALABLE TO BUDGETARY REQUIREMENTS.**



### KEY BENEFITS

- Multiple Users
- Flexible + Modular Solutions That Can Be Relocated + Reconfigured
- Scalable To Budgetary Cycles
- Tailored Design For Specific Training Requirements
- Low Maintenance Costs
- Realistic Simulations

### DETAILS

- Full Atmospheric Package Available
- Can Be Visually Identical To Any Location Or Environment
- Multiple Architectural Styles Can Be Created

### CANINE TRAINING FACILITY

BeaverFit Canine Training Facilities incorporate specific features, including various types of flooring to create differing scenarios. Alongside this, there is upper level grating to signal elevation changes, and integrated trap doors to enable trainers to engage with the working/service dogs in a variety of ways.



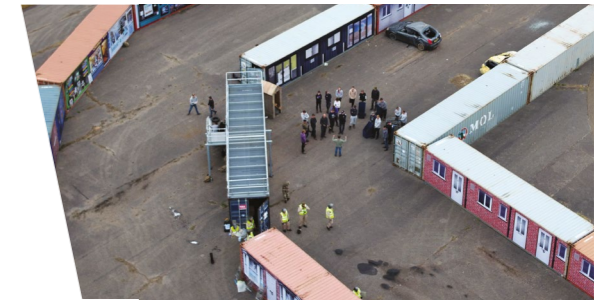
### DEFENSIVE TRAINING FACILITY

BeaverFit Defensive Training Facilities can be customised to incorporate field fortifications throughout. All specific defensive elements can be added to harden any training structure, utilising special reinforcements such as: anchoring points, barbed wire, sandbag ledges, and fortifications.



### PUBLIC ORDER TRAINING FACILITY

BeaverFit Public Order Training Facilities are entirely customisable, both in terms of size, layout and functionality. Our shipping container based solutions can incorporate any BeaverFit SOE training obstacles or features, to include realistic photographic street scenes or building fronts, a reconfigurable area space, viewing platforms and multi-floor buildings.



### SUBTERRANEAN FACILITY

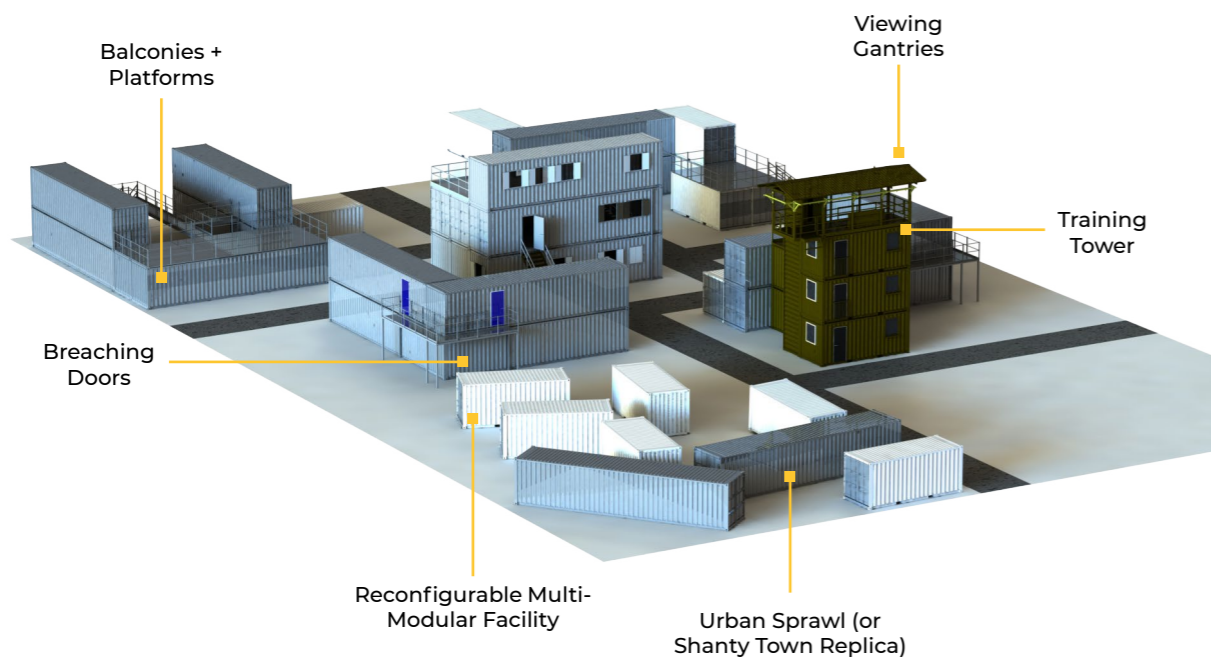
BeaverFit Subterranean solutions are purpose built training facilities, set to enhance the skills necessary for operations underground. Various subterranean attributes can be represented within this facility, including, decimated building areas, access tunnels in a variety of sizes, rugged cave networks and tunnel systems.

Subterranean styles can replicate that of the Karez tunnel network and an urban tunnel system - as would be found under any major near-peer city (sewer, maintenance, transportation).



### URBAN TRAINING ENVIRONMENT

BeaverFit Urban Training Environments are designed specifically to suit desired operational requirements including vehicle/foot patrols, house + room clearance + operating in a built-up area. Complexes are completely modular with an interchangeable exterior fascia that can be reconfigured to simulate different areas of operation. Our collaborative approach enables us to expertly deliver projects ranging from relatively simple, small footprint, single modality training solutions, to large, multi-modality, design-intensive facilities.





# TRAINING COMPLEXES HOUSE IN DEFENCE

CLIENT: GIBRALTAR BARRACKS  
DESIGN: 3 MONTHS | OFFSITE BUILD: 3 MONTHS | INSTALLATION: 1.5 MONTHS

- ✓ SINGLE AND DOUBLE STOREY BUILDINGS
- ✓ URBAN TRAINING TOWER WITH SIMULATED LIFT SHAFT + AIR DELIVERY PLATFORM
- ✓ METHOD OF ENTRY DOORS + WINDOWS | RECONFIGURABLE ROOMS + DOORS
- ✓ REALISTIC TRAINING PROPS + FURNITURE TO CREATE FULLY IMMERSIVE BUILDINGS
- ✓ AFTER ACTION REVIEW WITH REAL TIME PLAY BACK FOR INSTRUCTORS





BeaverFit originated from a family of Steel Fabricators, specialising in the industry since 1947.



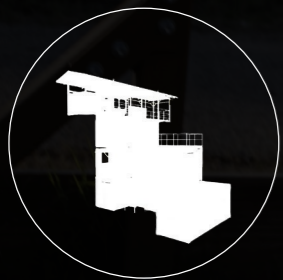
In 2006, Tom Beaver built a robust and innovative rig to train for the Arch challenge, made entirely from materials used by the family business.



Tom Beaver successfully introduced his product of excellence to the military. Thus, the birth of BeaverFit and further development of innovative products and fitness solutions - dominating the industry since 2010.



Co-founders, Tom and Jim Beaver further developed the product line to introduce the worlds first ever container gym solution - the FOB Locker. Since 2012, over 500 of these solutions have been deployed around the UK and Europe.



In 2015, the industry saw the introduction of BeaverFit Special Operations Equipment (SOE), a sister company to BeaverFit Ltd, supplying sought after and unique Special Operations Equipment, from Training Towers through to Live Fire Shoot Houses.



BeaverFit UK joined forces with two veterans from the USA, forming our sister company BeaverFit North America LLC and imminently winning their first contract with the U.S Marine Corps to supply 300 FOB Lockers.



**7+ YEARS  
IN BUSINESS**

BeaverFit's Special Operations Equipment (SOE) is an innovative evolution of our Human Performance solutions.



**MADE IN  
AUSTRALIA**

Using our partner on the Gold Coast, we manufacture solutions to the highest of standards, exceeding all expectations.



**30+  
INNOVATIVE  
SOLUTIONS**

Consisting of Lockers, Rigs, Towers and Villages, our SOE line creates modular and portable training centres for the mission essential tasks of forced entry/breaching, tactical fitness, urban warfare and more.



**GOVERNMENT  
APPROVED  
FACILITIES**

This allows us to create the highest rated security level facilities, no matter what the requirements.



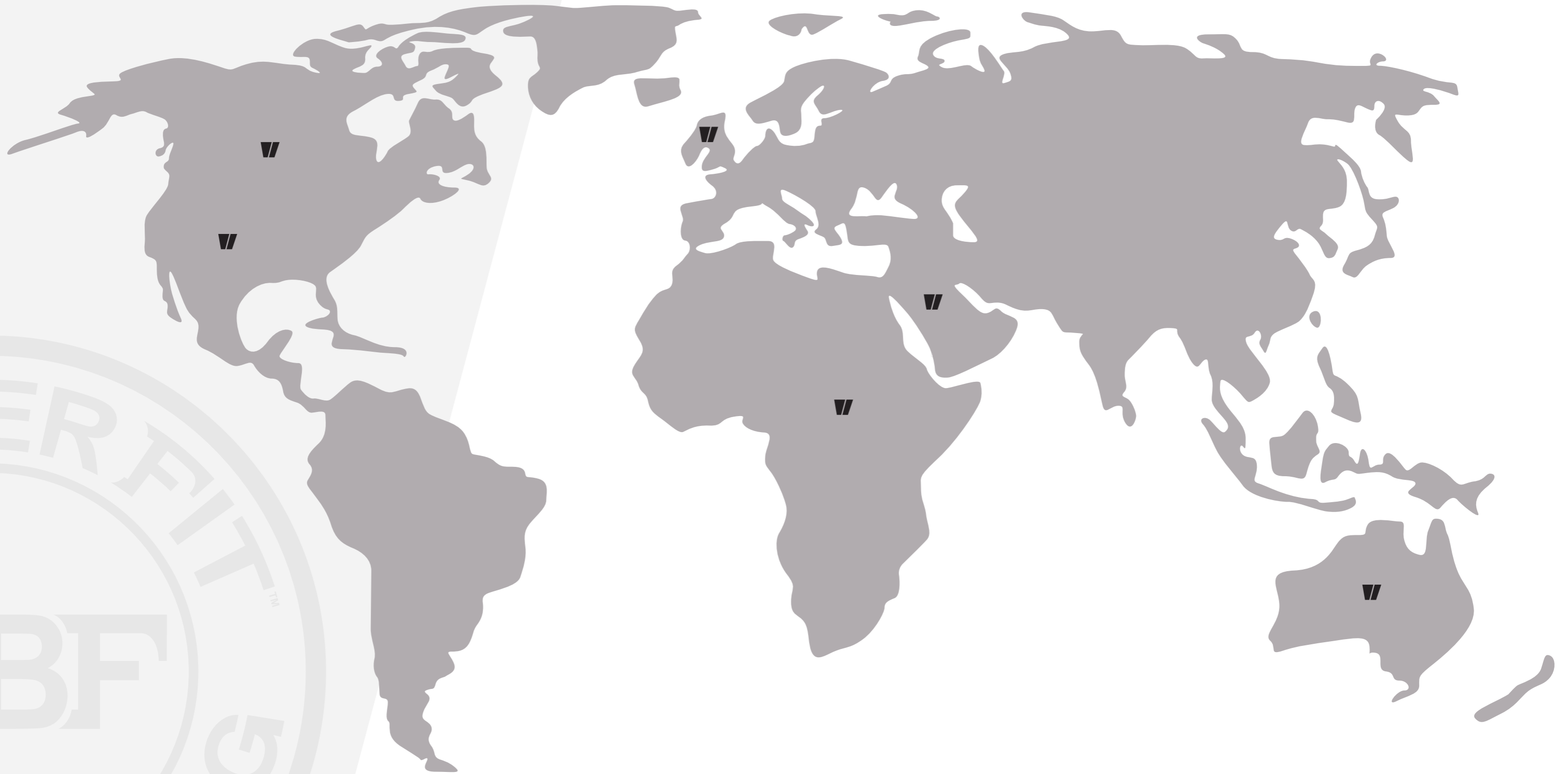
**300+ SOE  
SOLUTIONS  
DELIVERED**

With over 300 solutions delivered globally, we have a proven track record of expertly delivered projects, that have exceeded expectations from start to finish.



# OUR GLOBAL OPERATION

▮ PROJECT LOCATIONS



**CHRIS MCGRATH - USA**

E: [chris.mcgrath@beaverfitusa.com](mailto:chris.mcgrath@beaverfitusa.com)

T: (850) 816 - 9335

**NICK DAIL - USA**

E: [nick@beaverfitusa.com](mailto:nick@beaverfitusa.com)

T: (757) 284 - 9029

**GLENN OSINSKI - UK**

E: [glenn@beaverfit.com](mailto:glenn@beaverfit.com)

T: +44 (0) 1694 751 265

**FRED WALTERS - UK**

E: [fred@beaverfit.com](mailto:fred@beaverfit.com)

T: +44 (0) 1694 751 265

**CHRIS GOLDING - UK**

E: [chris.golding@beaverfit.com](mailto:chris.golding@beaverfit.com)

T: +44 (0) 1694 751 265

**SCOTT FLINT - AUS**

E: [scott@beaverfit.com](mailto:scott@beaverfit.com)


T: +61 (0) 408 687 816




# **BEAVERFIT™**

---

# **DAM STRONG**

 +61 (0) 408 687 816

 [scott@beaverfit.com](mailto:scott@beaverfit.com)

 [www.beaverfit.com](http://www.beaverfit.com)